

1AC-II/1LAC-II VoltAlert

The pocket-sized voltage detector

The next generation VoltAlert™ ac voltage testers from Fluke are easy to use—just touch the tip to a terminal strip, outlet, or cord. When the tip glows red and the unit beeps, you know there's voltage in the line. Electricians, maintenance, service, safety personnel, and homeowners can quickly test for energized circuits and defective grounds on the factory floor, in the shop, or at home.

- The 1AC-II continually tests its battery and its circuit integrity with a periodic double flash visual indication using Fluke Voltbeat™ technology.
- The VoltAlert™ Tester (1AC-II and 1LAC-II) is a Category IV –1000 V overvoltage rated product for added user protection, the highest rated of its kind.
- Voltage detection of 90 V to 1000 V ac or 200 V to 1000 V ac depending on model, as well as a 24 V to 1000 V ac control circuit model.
- It is rugged, reliable, and has a two-year warranty.

Specifications

Operating principle

Senses the steady state electrostatic field produced by ac voltage through insulation without requiring contact to the bare conductor. A red glow at the tip and a beeping noise (if not switched OFF) indicates the presence of voltage.

Note: Does not respond to random electrostatic discharge.

Voltage sensing ranges

Nominally, 90 V AC to 1000 V AC or 200 V AC to 1000 V AC depending on model, 45 Hz to 405 Hz; also a 20 V to 90 V control circuit model

Detector tip style

Blade or round, depending on model

Light source

One high intensity red LED

Agency approvals/listings

c CSA us, CE, TUV, C-Tick

Safety rating

1000 V, CAT IV

IP rating

IP 40

Operating temperature range

-10 °C to 50 °C

Operating humidity ranges

0 % to 95 % (0 °C to 30 °C)
0 % to 75 % (30 °C to 40 °C)
0 % to 45 % (40 °C to 55 °C)

Operating altitude

3000 meters

Batteries

2 AAA alkaline batteries included

Technical Data



Related standards and regulations for:

Safety

Europe and ROW: Low voltage directive and related standards as: EN61010 respectively IEC61010 for international requirements

EMC

Europe and ROW: EMC directive and related standards as: EN61326 respectively IEC61326 and their subset for ESD. Not all EMC standards are necessary due to no contact to mains voltage.

Environmental

Especially in European markets with relations to WEEE and RoHs directive for the used materials and information in the user documentation (manual)

Ordering Information

Fluke-1AC-A1-II ACV Detector 90-1000V, ENGL/LASPN/CFR
Part Number 2432932

Fluke-1AC-A2-II ACV Detector 90-1000V, BRPORT/JAP/CHIN-T
Part # 2432944

Fluke-1AC-E1-II ACV Detector 200-1000V, ENGL/GER/FREN/DUTCH
Part # 2432967

Fluke-1AC-E2-II ACV Detector 200-1000V, DANSH/NORW/SWED
Part # 2432971

Fluke-1AC-P1-II ACV Detector 200-1000V, KOR/THAI/SPANISH
Part #2433000

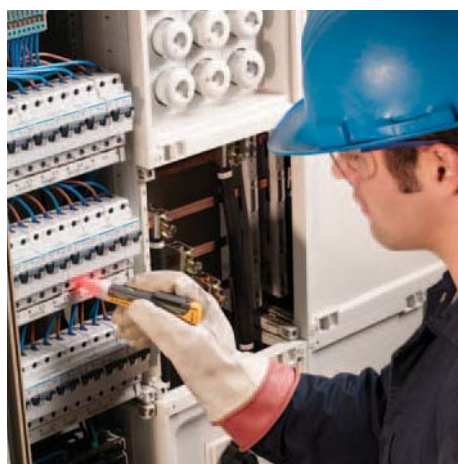
Fluke-1LAC-A-II Low Voltage Detector 20-90 VAC AMERICAS PACIFIC
Part # 2433021

FLK-1AC-A1-II-5PK Volt Alert, 5 Pack For USA
Part # 2433042

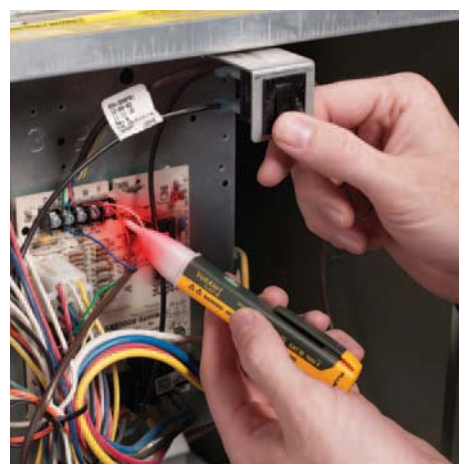
FLK-1AC-E1-II-5PK Volt Alert, 5 Pack For EUROPE
Part # 2433056



Americas version



European version



Low volt version

Fluke. *Keeping your world up and running.*

Fluke Corporation

PO Box 9090, Everett, WA USA 98206

Fluke Europe B.V.
PO Box 1186, 5602 BD
Eindhoven, The Netherlands

For more information call:
In the U.S.A. (800) 443-5853 or
Fax (425) 446-5116
In Europe/M-East/Africa (31 40) 2 675 200 or
Fax (31 40) 2 675 222
In Canada (800) 36-FLUKE or
Fax (905) 890-6866
From other countries +1 (425) 446-5500 or
Fax +1 (425) 446-5116
Web access: <http://www.fluke.com>

©2005 Fluke Corporation. All rights reserved.
Printed in U.S.A. 6/2005 2513868 D-US-N Rev A